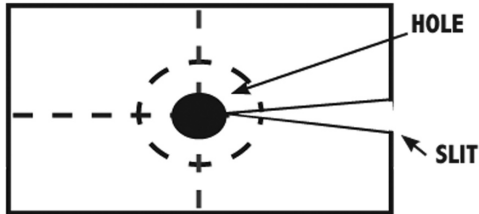




Liquid, Gold

BOND FUSING AND EXTENSIONS & OFF TRACK INVISIBLE BONDING



Use a disk that you can easily make from 1/2 of an ordinary business card, here's how...

1. Fold the 1/2 section of the card in half, then fold once more.
2. Cut a small piece off of the folded corner.
3. Unfold, cut from the middle of one side of the card to the hole in the center. When finished it should look like the diagram. You may do several sections at the same time using several disks.

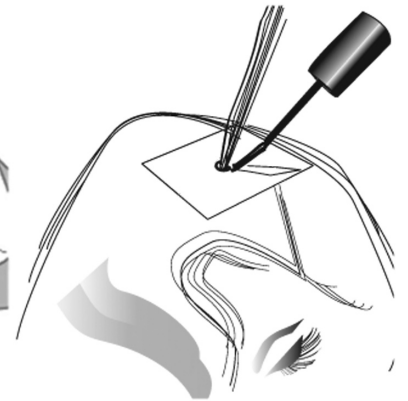
HINT: The longer the bond has to dry before BONDING the better it will adhere. Due to the fact that LIQUID GOLD will bond when dry. You can prepare several stands of commercial hair with the BOND. Then fuse them one-by-one.



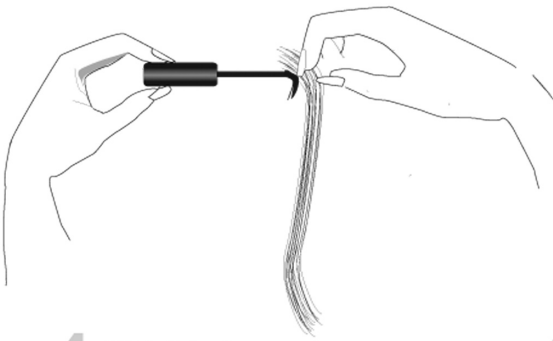
1 STEP 1. Shampoo hair with **LIQUID GOLD PRE BONDING SHAMPOO**. Apply to wet hair. Work into a rich lather. Rinse with warm water and repeat. **(Do not apply any conditioners until bonding is completed.)**



2 STEP 2. Towel blot. Blow dry hair while combing. This will render hair tangle free. It is important for hair next to scalp to be completely oil free and dry prior to bonding.



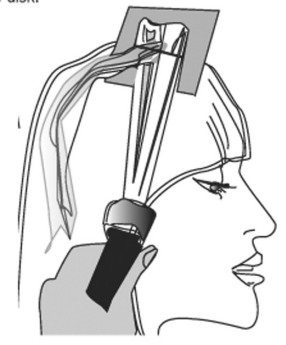
3 STEP 3. Take a small sections of patrons natural hair, twist it once or twice, then slide it through the slit in the disk to the hole in the center. Place the disk as close to the scalp as possible, (or anywhere along the hair shaft you desire.) Then hold in place with clips. Apply **LIQUID GOLD BOND-A-WEAV** to the hair close to the disk.



4 STEP 4. Take commercial hair to be added. (Same amount or more as patrons natural hair,) clip blunt at the end. Flair the ends like a paint brush. Apply the BOND to both sides of flared hair. Allow to dry 3-5 minutes (or until no longer wet to the touch.) to avoid sticking to fingers.



5 STEP 5. Place the hair to be added to natural hair using your thumb and forefinger, pinch and roll the added hair around the natural hair.



6 STEP 6. Using a warm curling iron, place the section you are fusing between the shell and the barrel. Close lightly for about 3 seconds. Reposition iron as shown and repeat.

HOW TO DO OFF TRACK INVISIBLE BOND WEAVING: Due to the fact that LIQUID GOLD, dries clear instead of black or white, weft and scalp hair are blended after a short drying time, unlike all other bonding products, you can provide the following service to patrons with very thinning hair. Most commercial hair for weaving are to smaller wefts sewed together.

Using sharp razor blade or scissors, split the weft into two pieces. (This will compare with the patrons own thin hair). Apply the bond to the weft hair just below the weft (not on the weft on both side. Then to the parted hair close to the scalp. The same as in Steps 3, 5, on the other side of this sheet. Lay weft in part so that bonded area of the weft hair will be where bond

is on the scalp hair below part. Press on with fingers, then seal lightly with curling iron, as in Step 6, (as shown on other side of sheet, Step 6) cut away weft. The parting will make a perfect channel for cutting away weft without cutting the natural hair, when done correctly, the added hair should look as though it is growing from the scalp.

How to DE-FUSE THE HAIR (REMOVE). Wet a piece of cotton with the **BOND DISSOLVER**. Place cotton around the fused section. Squeeze lightly with fingers for about 5 seconds, and separate slowly. You may apply heat in the same manner as in Step 6, above, for faster de-fusing after applying dissolver.